

# Exploring Spirals

copyright 2008 by Laurie Lee

*Exploring Spirals pays homage to Holly Webb's simple yet lovely pattern, Exploring Stripes, originally published in Interweave Knits Winter 02/03. I wanted to play around with the idea of knitting the beads into a spiraling design. The decreases and bottom of the bag gave me fits for awhile, but I eventually hit on a perfect solution.*

*Sadly, Holly's pattern is out of print and hard to find. Here's a different take on a one-skein beaded bag, knit with beautiful Koigu KPPPM.*

**MATERIALS:** One skein Koigu Painter's Palette Premium Merino (100% Merino, 50g/175 yd/160 m), any color. US 2 (3 mm) 16" circular needles, four or five US 2 dpns. 660 #6 glass beads.

**GAUGE:** 8 sts/inch in circular stockinette.

**INSTRUCTIONS:** Wind skein of wool into a center-pull ball. Using a beading needle, string beads onto ball of wool, and place ball with beads into a plastic bowl about 8" in diameter. Push the beads about 10 yds down the length of wool to free up yarn with which to knit. You'll need to push the beads in sections (about 100 beads at a time) to get them to move smoothly, without placing undue strain on the yarn.

CO 121 st. Join into round, being careful not to twist, pm. Move first co stitch to right needle and last co st to left needle; knit one round. Next rd, begin seed st border: Rd 1 – k 1, p 1. Rd 2 – p 1, k 1. Repeat these two rds. Next rd, dc 1 st and create eyelets as

follows: [k 2tog, k 4, yo,] remove marker, k 2tog, replace marker. (120 sts). Knit two rds.

Now you will start using the beads. Every other round, you will need 15 beads (until decreases begin). When necessary, push the beads (in sections) about 10 yds down the wool.

## Main Pattern:

R1 (and all odd rows): k to end

R2: [k7, sl wyif, slide bead to sit atop sl st], end k7

R4: sl wyif, slide bead to sit atop sl st, k 7

R6: k1, [sl wyif, slide bead to sit atop sl st, k7] k 6

R8: k2, [sl wyif, slide bead to sit atop sl st, k7] k 5

R10: k3, [sl wyif, slide bead to sit atop sl st, k7] k 4

R12: k4, [sl wyif, slide bead to sit atop sl st, k7] k 3

R14: k5, [sl wyif, slide bead to sit atop sl st, k7] k 2

R16: k6, [sl wyif, slide bead to sit atop sl st, k7], k 1



## Pattern Chart:

16	15	14	13	12	11	10	9	8	7	6	5	4	3	2	1
	∨								∨						
		∨								∨					
			∨							∨					
				∨							∨				
					∨								∨		
						∨								∨	
							∨								∨
	∨								∨						

Created in Knit Visualizer ([www.knitfoundry.com](http://www.knitfoundry.com))

### Legend:



knit



slip wyif

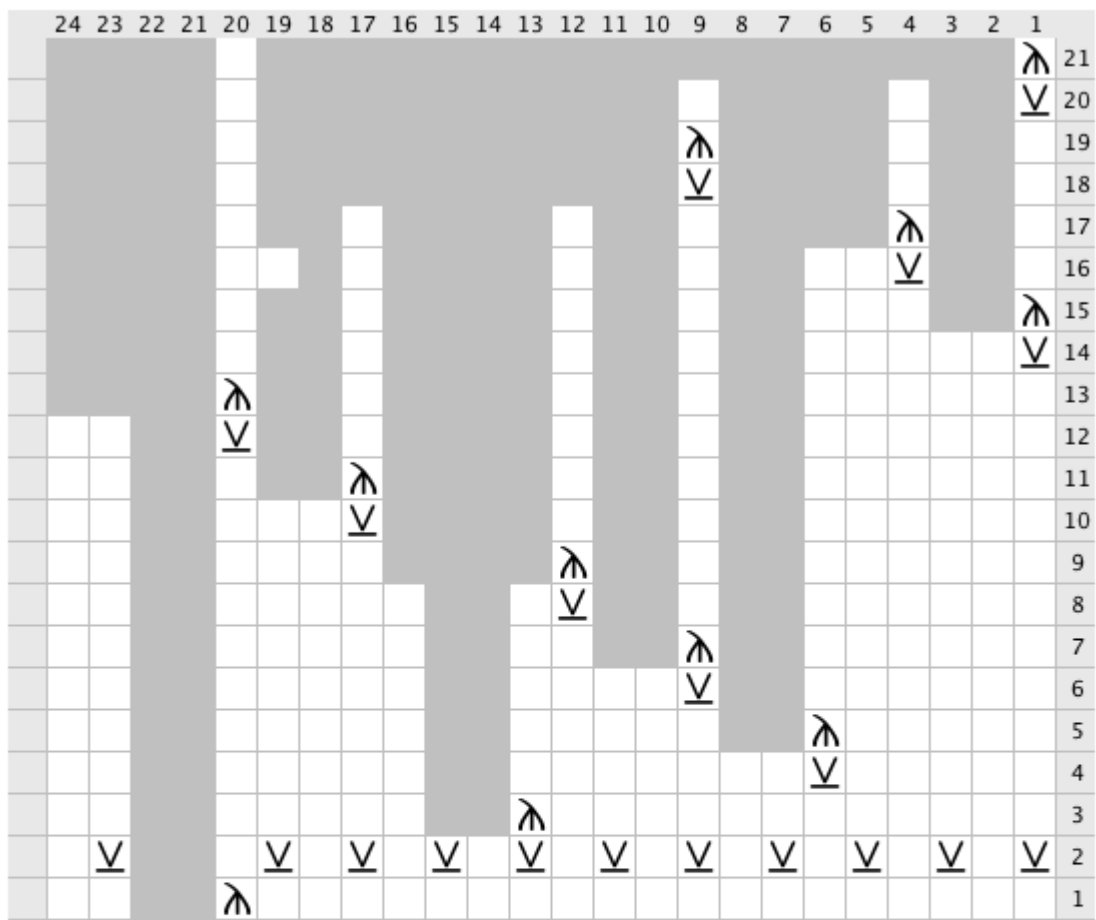
### Notes:

When instructed to "slip wyif," slip st pw, slide a bead to sit atop the slipped stitch, and work the next stitch as instructed.

Repeat pattern st until 74 rows have been worked, ending with pattern row 10. Begin decreases as follows:

- R1: k19, sl1 k2tog pssso [k21, sl1 k2tog pssso], k2
- R2: sl wyif, slide bead to sit atop sl st, k1
- R3: k12, sl1 k2tog pssso, [k19, sl1 k2tog pssso], k7
- R4: k5, sl wyif, slide bead to sit atop sl st, [k19, sl wyif, slide bead to sit atop sl st,], k14
- R5: k5, sl1 k2tog pssso, [k17, sl1 k2tog pssso], k12
- R6: k6, sl wyif, slide bead to sit atop sl st, [k 17, sl wyif, slide bead to sit atop sl st], k11
- R7: k6, sl1 k2tog pssso, [k15, sl1 s2tog pssso], k9
- R8: k7, sl wyif, slide bead to sit atop sl st, [k15, sl wyif, slide bead to sit atop sl st], k8
- R9: k7, sl1 k2tog, pssso, [k13, sl1 s2tog pssso], k6
- R10: k8, sl wyif, slide bead to sit atop sl st, [k13, sl wyif, slide bead to sit atop sl st], k5
- R11: k8, sl1 k2tog pssso, [k11, sl1 k2tog pssso], k3
- R12: k9, sl wyif, slide bead to sit atop sl st, [k11, sl wyif, slide bead to sit atop sl st], k2
- R13: k9, sl1 k2tog pssso
- R14: sl wyif, slide bead to sit atop sl st, k9
- R15: sl1 k2tog pssso, k7
- R16: k1, sl wyif, slide bead to sit atop sl st, [k7, sl wyif, slide bead to sit atop sl st], k6
- R17: k1, sl1 k2tog pssso, [k5, sl1 k2tog pssso], k4
- R18: k2, sl wyif, slide bead to sit atop sl st, [k3, sl wyif, slide bead to sit atop sl st], k1
- R19: k2, sl1 k2tog pssso, [k3, sl1 k2tog pssso], k1
- R20: sl wyif, slide bead to sit atop sl st, k3
- R21: sl1 k2tog pssso, k1

## Decreases Chart:



### Legend:

knit

sl1 k2tog pss0

No Stitch

slip wyif

Created in Knit Visualizer ([www.knitfoundry.com](http://www.knitfoundry.com))

Thread yarn end through remaining 10 sts and pull snug. Knit 3 st i-cord for 32 in. Weave i-cord in and out through eyelets, and then weave it through again. Tie ends of i-cord together and pull to close bag. Weave in ends. Wet block bag.

Pattern and images copyright 2008 by Laurie Lee/Alarming Female Designs. All rights reserved. Visit my blog at <http://www.alarmingfemale.com>

